

BoilerSupplies.Com

Power Plus International

To Order Parts & Warranty Information

1-800-780-3776

www.boilersupplies.com

SIGHT GLASS - USE AND CARE

WARNING: Improper installation or maintenance can cause immediate or delayed glass breakage, which can result in bodily injury. Wear safety glasses when looking toward, or working around a sight glass. **GLASS CAN BLOW OUT OF THE HOUSING.**

FAILURE TO OBSERVE THE FOLLOWING DO'S AND DO NOT'S CAN CAUSE BREAKAGE AND INJURY.

DO NOT'S

DO NOT exceed the glass pressure rating. DO NOT over-tighten cover plate bolts. DO NOT reuse any glass, gasket or shield. DO NOT attempt to inspect or clean glass, adjust cover or tighten plate bolts while unit is in operation. DO NOT weld, impact, or sandblast in the sight glass area without protecting the sight glass. DO NOT use glass that is scratched, chipped, or otherwise damaged. DO NOT bump, impact, or scratch the glass. DO NOT exceed equipment manufacturer's recommended working pressures. DO NOT tighten the bolts while a sight glass is hot. DO NOT use a cushion gasket (non-pressure side) greater than 1/16" thick. DO NOT use a pressure gasket (pressure side) greater than 1/4" thick.

DO'S

DO follow these and equipment manufacturer's recommendations for installation and maintenance. DO protect the outside face of the glass from sudden temperature changes, such as drafts, water spray, etc. DO inspect the glass daily and keep maintenance records to verify that routine inspection is being properly done. DO use the same diameter gaskets on both sides. DO remove all deposits from the seat areas of the frame and cover plate before installing a sight glass. Check frame and cover plate for flatness and warp. DO have the bolt holes in the cover plate large enough for the bolts to go in easily. Nuts should be drawn up finger tight, then tightened in the recommended sequence. (Tighten nuts only enough to give a positive seal against the process pressure.) DO use an accurate torque wrench to assure proper loading of cover plate bolts. Over torquing can break the glass.

A good safety practice is to incorporate a protective guard in the sight glass assembly design. Once a sight glass has been removed from its mounting, regardless of the reason for removal, discard the glass and gaskets, and substitute with a new set of glass and gaskets. Used sight glasses may be damaged and present safety risks.

MAINTENANCE: Examine the sight glass regularly for any signs of clouding, corrosion, erosion, or scratching. In new processes, the sight glass should be inspected daily until the need for replacement becomes apparent. This will help establish the routine inspection/replacement cycle.

DO NOT ATTEMPT TO CLEAN GLASS WHILE EQUIPMENT IS IN OPERATION.

Keep glass clean using commercial glass cleaners. Where regular cleaners do not seem to work, use dilute acids such as muriatic acid. Observe safety rules carefully when handling dangerous cleaning solutions. Never use wire brushes, metal scrapers, or other harsh abrasives, which would scratch the glass.

INSPECTION: To examine for scratches, shine a very bright concentrated light at about a 45° angle. Anything which glistens brightly, should be examined closely. Any scratch which glistens and catches the fingernail or any star-shaped or crescent shaped mark which glistens is cause for replacement. Scratches, corrosion, chips or surface damage on any side or edge weakens the sight glass. Any sight glass, which appears cloudy or roughened and will not respond to cleaning procedures should be replaced.

STORING: Keep sight glasses in original boxes until ready to install them.

HANDLING: Avoid bumping, chipping, or scratching. Any glass to glass contact can cause scratches and must be avoided. Do not use damaged glasses.

INSTALLING: Gasket seats must be flat, smooth, clean and free of metal or gasket fragments.

MAINTENANCE AND INSTALLATION INSTRUCTIONS FOR Boilersupplies.com SAF-T-EYE FURNACE VIEWPORT

MAINTENANCE & INSTALLATION FOR PRESSURE TITE SAF-T-EYE

TO CLEAN THE INTERIOR OF THE GLASS, THE FRAME (10) MUST BE REMOVED FROM THE BODY (14) OF THE SAF-T-EYE. WHEN THIS IS DONE, THE SAF-T-EYE IS NO LONGER CONSIDERED PRESSURE TITE. WE RECOMMEND THIS PROCEDURE (AS SHOWN IN SUB-ASSY. #1 & #2) BE USED ONCE THE GLASS HAS BEEN CLEANED OR REPLACED BEFORE THE EQUIPMENT IS PUT BACK INTO OPERATION.

COMPONENTS OF ASSEMBLY

(10) SUB-ASSEMBLY #1 (FRAME ASSY.)

APPLY 1/8" BEAD OF SEALANT (12) TO INTERIOR LIP OF FRAME (1). PLACE FRAME GASKET (2) ONTO SEALANT (12), REPEAT WITH 1/8" BEAD OF SEALANT (12). POSITION GLASS (3) INTO PLACE ON SEALANT (12). POSITION TRUSS HEAD GASKETS (5) OVER HOLES IN INTERIOR OF FRAME (1) & PLACE TRUSS HEAD BOLTS (4) THRU HOLES. PLACE ACORN NUTS (6) OVER TRUSS HEAD BOLTS (4) ON EXTERIOR OF FRAME (1) & TIGHTEN WITH EXTREME CARE OR GLASS MAY BREAK.

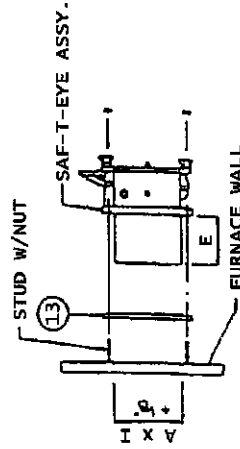
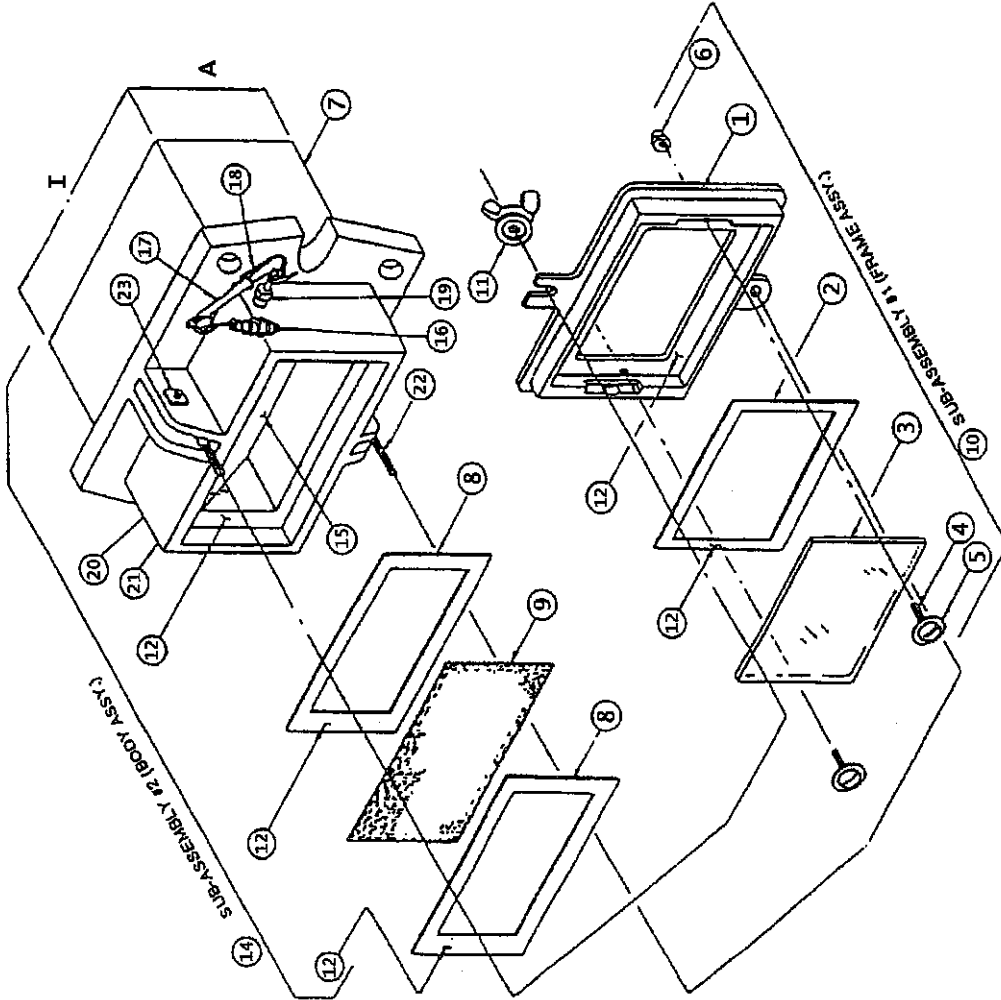
(14) SUB-ASSEMBLY #2 (BODY ASSY.)

APPLY 1/8" BEAD OF SEALANT (12) TO INTERIOR LIP OF BODY (7). PLACE GASKET (8) ONTO SEALANT (12). REPEAT WITH SEALANT (12). PLACE SCREEN (9) ONTO SEALANT (12). PLACE GASKET (9) ONTO SCREEN (9). REPEAT WITH SEALANT (12). PLACE ASSEMBLED FRAME (10) ONTO SEALANT (12). POSITION METAL WASHERS & WING NUTS (11) IN PLACE AND TIGHTEN.

INSTALLATION INSTRUCTIONS

- CUT HOLE IN FURNACE WALL APPROX. 1/8" LARGER THAN THE A & I DIMENSIONS.
- POSITION STUDS PROVIDED BY CUSTOMER.
- PLACE FLANGE GASKET (19) TO FLANGE ON SAF-T-EYE (E' DIMENSION).
- INSERT INTO FURNACE WALL OPENING.
- SECURELY TIGHTEN NUTS ON STUDS.

SEE CATALOG DIMENSION SHEET FOR STUD LOCATION & FURNACE WALL HOLE DIMENSIONS.



INSTALLATION

PARTS LIST

1	FRAME
2	* FRAME GASKET
3	* GLASS
4	TRUSS HEAD BOLTS (2 PER UNIT)
5	TRUSS HEAD GASKETS (2 PER UNIT)
6	ACORN NUTS (2 PER UNIT)
7	BODY
8	* BODY GASKET (2 PER UNIT)
9	* S.S. SCREEN
10	SUB-ASSEMBLY #1 (FRAME ASSY.)
11	WING NUTS & METAL WASHERS (2 EA PER UNIT)
12	* SEALANT
13	* MOUNTING FLANGE GASKET
14	SUB-ASSEMBLY #2 (BODY ASSY.)
15	SHUTTER
16	WIRE DROP HANDLE
17	HANDLE ROD
18	TORSION SPRING
19	COMPRESSION FITTING W/PACKING
20	PIPE PLUG/WALNUT
21	PIPE PLUG
22	EYE BOLTS
23	BOLT W/SQUARE NUTS
*	INDICATES RECOMMENDED SPARE PARTS

ABOVE ASSEMBLY IS A PRESSURE-TITE MODEL.

THE STANDARD MODEL CONTAINS NO SEALANT (PART # 12).