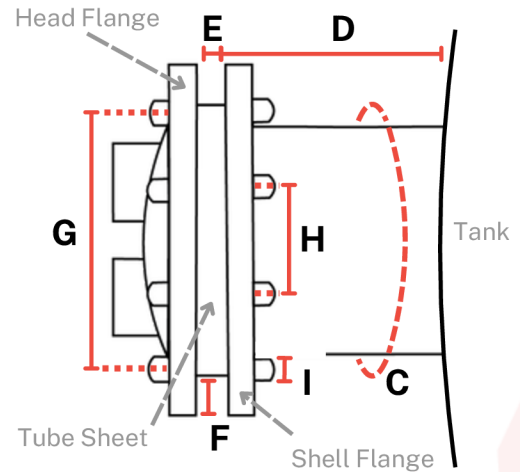
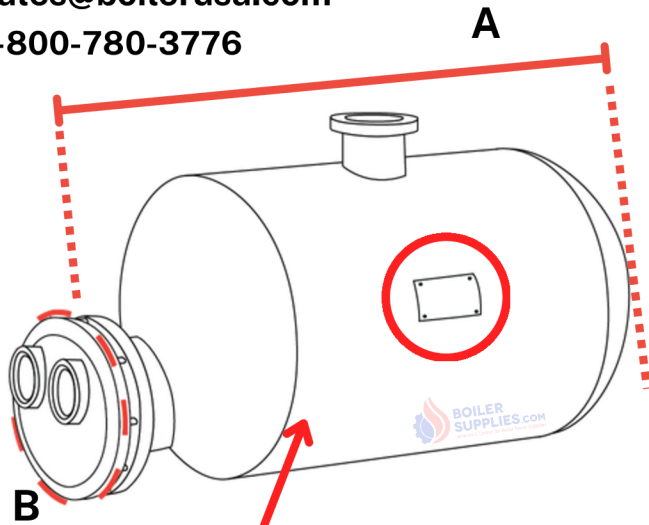


Measuring for U-Tube Bundle Replacement In Tank & Still in Service



sales@boilerusa.com

1-800-780-3776



STOP: If you can access the unit's data tag, no measurements are needed. Just retrieve this information:

National Board #: _____

Model #: _____

Year: _____

Serial #: _____

Manufacturer: _____

Number of Bolts: _____

Check One:

☐ Domestic Hot Water

☐ Heating Hot Water

(Optional)

Tube Sheet Material: _____

Tube Material: _____

A. Overall Length: _____

Measure from where the head flange meets the tube sheet to the end of the tank.

B. Flange Circumference: _____

Wrap garment tape or similar tool around head flange.

C. Shell Circumference: _____

Wrap garment tape or similar tool around unit's neck.

D. Tube Sheet to Tank: _____

Measure from where the tube sheet meets the shell flange to the edge of the tank.

E. Tube Sheet Thickness: _____

Measure the distance between both flanges.

F. Tube Sheet to Lip of Flange: _____

Skip if measuring a full face tube bundle.
Otherwise, measure the distance from the top of the tube sheet to the lip of the flange.

Skip the Following if Measuring a Boltless Tube Sheet:

G. Cross Bolt Center-to-Center: _____

If possible, measure from the center of one bolt to the center of the bolt directly opposite it on the flange.

H. Adjacent Bolt Center-to-Center: _____

I. Bolt Diameter: _____

Boiler Supplies | McDonough, GA | 1-800-780-3776

| Circle One of Each | |
|---|--|
| 1. # of Passes 2-Pass 4-Pass | 2. Tube Sheet Boltless Full Face (Bolted) |

Phone: _____

Name: _____

Email: _____

Company Name: _____