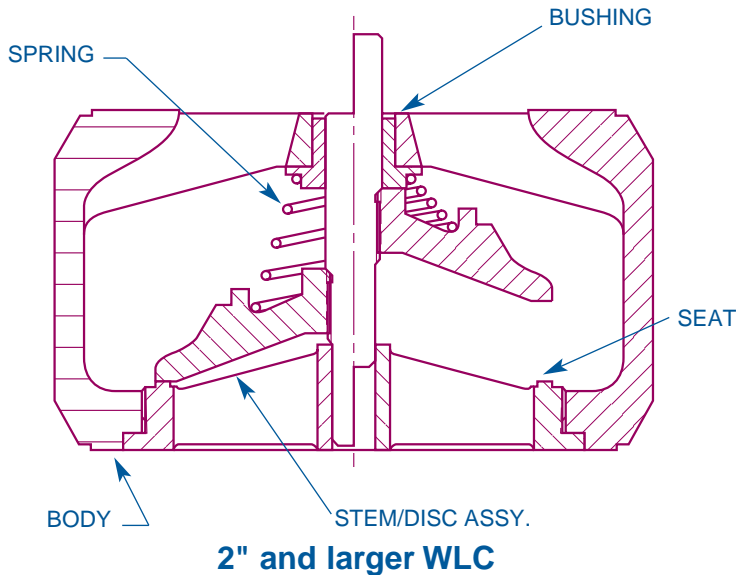
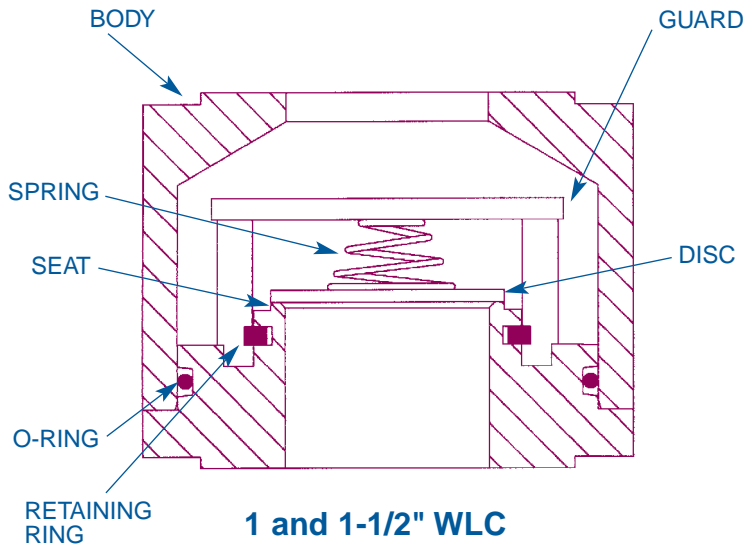


# WLC<sup>®</sup>



## Features:

- **Wafer design**
- **Lightweight**
- **Spring-assisted silent closing**
- **Edge guided (1" & 1-1/2")**
- **Center guided (2" to 10")**
- **Dual guided stem (2" to 10")**
- **Horizontal or vertical installation**
- **Protected spring**
- **ANSI 150 to 2500**
  - 1" to 10" Line Size
  - WCB & 316 SS bodies
  - 316 SS trim
  - Ends:
    - Wafer RF
    - Wafer RTJ
  - MSS-SP 61 seat leakage
  - API 594 Face-to-Face dimension:
    - Class 600 RF
    - Class 900/1500 RF
- **OPTIONS:**
  - Inconel<sup>®</sup> X-750 Spring
  - Soft Seat
  - Custom Sizing
  - Body Materials:
    - Alloy20, Inconel<sup>®</sup> 625, Titanium
  - Stellite trim (600°F+)
  - Weld Neck Flanges to meet B16.10 Face-to-Face dimensions
  - NACE
- **ANSI 125 & 250**
  - 2" to 10" Line Size
  - Cast Iron body
  - Bronze or 316 SS trim
  - Ends:
    - Wafer FF
  - AWWA seat leakage
  - FM approval:
    - 2" to 10" Cl. 125 w/Bronze trim
- **OPTIONS:**
  - Soft seat

The DFT<sup>®</sup> Model WLC Wafer style Silent Check Valve is a lightweight, spring-assisted, center guided, in-line check valve that provides reliable, low maintenance service for a wide range of fluids and pressure/temperature combinations. The joint between the seat ring and body is sealed by the flange gasket upon installation preventing any leakage through the joint when the valve is in service.

# WLC®

## Class 150 RF<sup>(1)</sup>

	1"*	1 1/2"*
A	2	2 1/2
B	2 5/8	3 1/4
Weight	2	4
CV	19	36

## Class 300 RF<sup>(1)</sup>

	1"*	1 1/2"*
A	2	2 1/2
B	2 7/8	3 3/4
Weight	3	6
CV	13	36

## Class 150/300 RF

	2"*	2 1/2"*	3"*	4"*	5"*	6"*	8"*
A	2 5/8	2 7/8	3 1/8	4	4 5/8	5 1/2	6 1/2
B	4 3/8	5 1/8	5 3/4	7 1/8	8 1/2	9 7/8	12 1/8
Weight	4	10	12	20	35	41	86
CV	57	95	140	265	360	506	860

## 150 RF

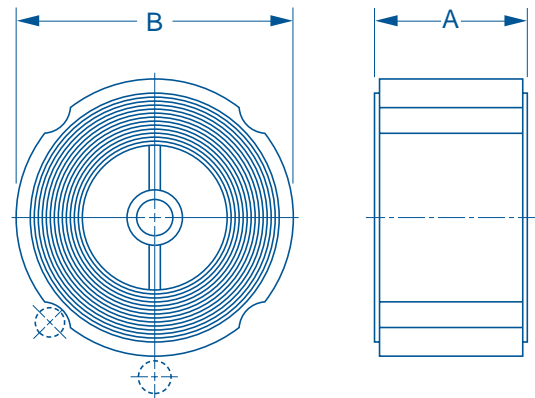
	10"*
A	8 1/4
B	17 5/8
Weight	138
CV	1355

## Class 600 RF<sup>(1)</sup>

	1"	1 1/2"	2"	3"	4"	6"
A	2 3/8	2 7/8	2 3/8	2 7/8	3 1/8	5 3/8
B	2 7/8	3 3/4	4 1/4	5 3/4	7 1/2	10 3/8
Weight	2 1/2	8	5	11	21	68
CV	19	23	53	133	234	441

## Class 900/1500 RF<sup>(1)</sup>

	1"	1 1/2"	2"	3"	4"	6"
A	2 3/8	2 7/8	2 3/4	3 1/4	4	6 1/4
B	3 1/8	3 7/8	5 1/2	6 3/4	8 1/8	11 1/4
Weight	4	8	14	21	38	100
CV	19	23	48	113	211	370



Dual Pressure Service: Class 125/250 for 2" to 6"  
Class 150/300 for 2" to 8", Class 900/1500 for 1" to 6"

## Class 1500 RTJ<sup>(2)</sup>

	1"	1 1/2"	2"*	3"	4"*	6"	10"
A	2 3/8	2 7/8	3 1/8	3 1/4	4 1/8	6 1/4	9 3/4
B	3 1/8	3 7/8	5 1/2	6 3/4	8 1/4	11 1/4	17 1/16
Weight	4	7	14	21	38	100	430
CV	19	23	48	113	211	370	755

## 1500 RF<sup>(2)</sup>

	8"	10"
A	8 1/8	9 3/4
B	13 13/16	17
Weight	244	430
CV	620	755

## 2500 RTJ<sup>(2)</sup>

	1"	2"*	3"
A	2 3/8	2 13/16	3 3/8
B	3 1/8	5 3/4	7 1/2
Weight	4.1	17	33
CV	19	35	80

## Class 125/250 Cast Iron FF

	2"*	2 1/2"*	3"*	4"*	5"*	6"*
A	2 5/8	2 7/8	3 1/8	4	4 3/4	5 1/2
B	4 1/4	5	5 3/4	7	8 3/8	9 3/4
Weight	6	7	12	18	27	42
CV	66	88	130	228	350	520

## Class 125 Cast Iron FF

	8"*	10"*
A	6 1/2	8 1/4
B	13 3/8	16
Weight	85	129
CV	900	1450

## Class 250 Cast Iron FF

	8"*	10"*
A	6 1/2	8 1/4
B	13 3/8	16
Weight	86	137
CV	900	1450

All dimensions are in inches. Weights are in pounds.  
\*Does not meet API 594 face-to-face dimension.

Notes: (1) Size 1" and 1-1/2" have Buna-N (-70 to 250°F) body "O" ring seals. Contact DFT for other materials.  
(2) All sizes have Buna-N (-70 to 250°F) body "O" ring seals except 10" Cl. 1500 RTJ/RF have spiral wound body seals. Contact DFT for other materials.