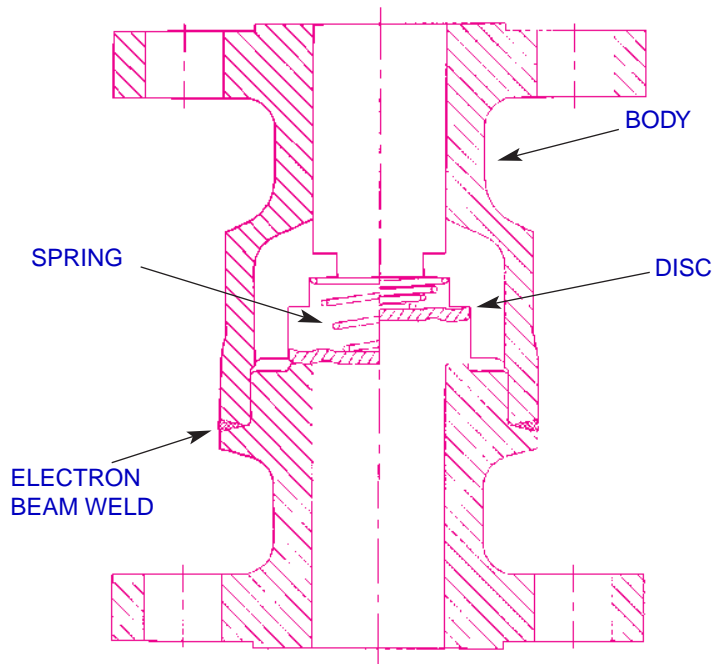


DLC®

Features:



- ANSI **Face-to-Face** dimensions
- Spring-assisted silent closing
- 3/4" to 3" Line size
- ANSI 150 and 300
- 316 Stainless Steel Construction
- Raised Face Flanged ends
- Inconel X-750 spring
- Electron beam welded body
- Meets B16.34 - 1988
- Meets NACE MR-01-75
- Horizontal or vertical installation
- Body guided disc
- Tight shut-off - lapped disc & seat
- Simplified construction - 3 parts
- Versatile
- **OPTIONS:**
 - 316 SS Springs
 - Body Materials
 - Alloy 20
 - Hastelloy® C

The DFT® Model DLC is a corrosion resistant, dependable, versatile and economical spring assisted, in-line check valve for a wide range of applications. Whether the fluid is liquid, gas or steam, the DLC provides tight shut-off and protects other equipment in the system from water hammer. Its 316 stainless steel construction insures a long service life.

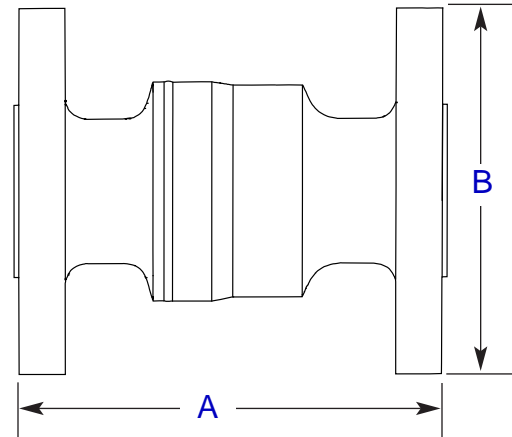
Class 150 RF

	3/4"	1"	1 1/2"	2"	3"
A	4.62	5.00	6.50	8.00	9.50
B	3.88	4.25	5.00	6.00	7.50
Weight	4.5	6.0	11.7	19.1	39.2
CV	13	22	54	93	180
Cracking Pressure (psi)	.3	.3	.2	.2	.3

Class 300 RF

	3/4"	1"	1 1/2"	2"	3"
A	7.00	8.50	9.50	10.50	12.50
B	4.62	4.88	6.12	6.50	8.25
Weight	7.2	9.9	18.5	24.3	50.5
CV	13	22	54	93	180
Cracking Pressure (psi)	.3	.3	.2	.2	.3

Notes: All dimensions are in inches. Weights are in pounds.



	MATERIALS OF CONSTRUCTION
Body	A351 CF8M
Seat	A351 CF8M
Spring	Inconel® X-750
Disc	316 SS

PRESSURE TEMPERATURE RATING (PSIG)		
Temp. (deg.F)	Class 150	Class 300
-460 to 100°	275	720
200	235	620
250	225	590
300	215	560
400	195	515
470	175	490
500	170	480
600	140	450
700	110	430